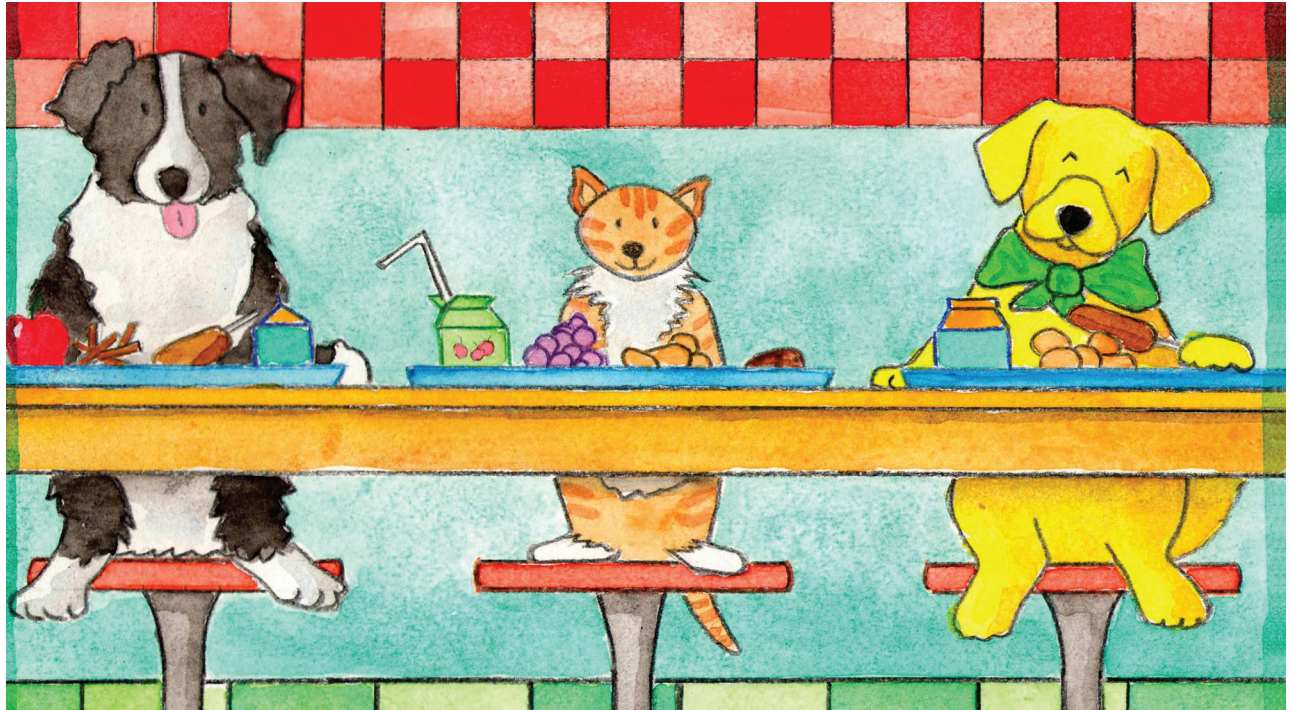
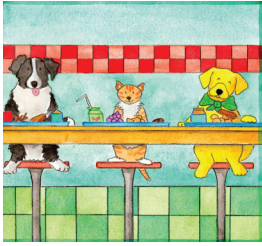


# Wyatt

# The Wonder Dog™

Learns about Friendship

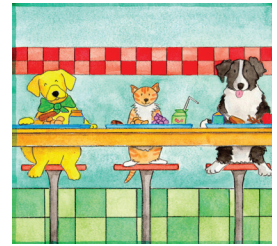




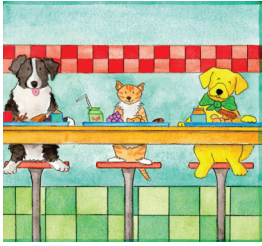
## Discussion Questions

1. What are some things that Wyatt wonders about? What are some things that you wonder about?
2. Who is Ami? What does Wyatt notice about Ami?
3. How is Ami feeling? Why?
4. Have you ever been new and not known anyone? How did you feel?
5. What has Ami tried to make friends?
6. What does Wyatt say to encourage her not to give up?
7. What is Wyatt's father's advice about helping Ami make friends?
8. What does Wyatt do to help Ami make friends? Does it work?
9. How does Ami feel at the end of the story?
10. What does Wyatt learn about helping others?

## Discussion Answers



1. Wyatt wonders what makes stars shine and what it would be like to ride on a spaceship. He wonders if he will ever be able to read as well as Mrs. Wilson and if he will ever hit a home run.
2. Ami is the new kid at school. Wyatt notices she looks lonely.
3. Ami feels lonely and sad.
4. \_\_\_\_\_  
\_\_\_\_\_
5. Ami doesn't know what to do.
6. Wyatt tells Ami he is going to figure out what she can do to make friends.
7. Wyatt's father reminds Wyatt of how he felt when he was new in kindergarten. He says Wyatt should let Ami know that he cares.
8. Wyatt introduces her to his friends and asks her to play a game she likes at recess.
9. Ami feels happy.
10. Wyatt learns to think about how he would like to be treated and treat others the same way.



## **Lesson Plan**

### **Friendship:**

### **We are alike/we are different**

#### **ASCA National Standard Domain: Personal/Social**

- A. Students will acquire the knowledge, attitudes, and interpersonal skills to help them understand and respect self and others.

#### **ASCA National Standard Domain: Personal/Social**

- A. Students will acquire the attitudes, knowledge and skills contributing to effective learning in school and across the lifespan

#### **Objectives:**

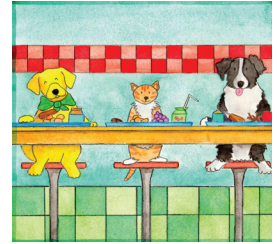
- Identify the many ways that people are alike and different
- Identify ways to respect and value differences
- Identify ways to make friends in a new environment

**Essential Question:** Can you be friends with someone who is very different from you? How do you show respect for someone who is different?

**Activating Learning Strategies:** Brainstorm, Active Listening, Critical Thinking

#### **Lesson:**

- Discuss: What are some of the ways that people are alike? What



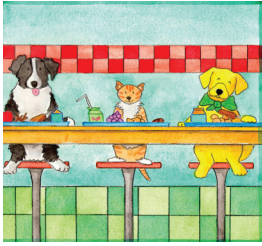
are ways that people are different? Are there some ways that everyone is alike (we all have feelings...)? Has anyone ever made fun of you because you were different? How did that feel? Is it ever okay to make fun of someone because they are different?

- Read: Wyatt the Wonder Dog Learns about Friendship by Lynne Watts
- Discuss: How did Ami feel at her new school? What did she do to try and make friends? Was she successful? What else could she have done? What did Wyatt do to help out? Was he successful? What is something you can do if someone is new in your class?
- Have each student find a partner and complete the worksheets: Friends Alike and Different

**Alternative activity:** Have students write about a time when they were new. How were they treated? How did they make friends? What advice would they give to Ami?

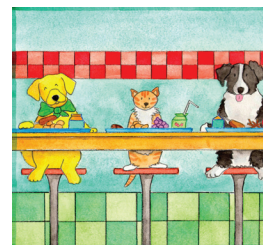
### **Materials:**

- Wyatt the Wonder Dog Learns about Friendship by Lynne Watts
- Friends Alike and Different Worksheets



## How are you and your friends alike?

Pick a partner and talk to them about how you are alike. Write one way in each section of the box below.

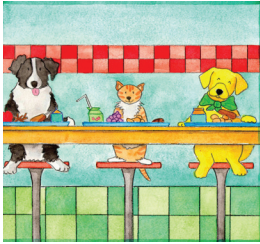



### **How are you and your friends different?**

Talk to your partner and write one way that you and your partner are different in each section of the box below


**Discuss:** Can you be friends with someone who is different? What makes a good friend?





## Learns About Friendship Puzzle

R	H	Y	A	Q	T	U	U	T	Y	Q	D	Z	V	I
A	D	L	A	L	K	E	R	S	L	P	D	N	N	M
X	I	E	D	A	I	U	T	H	K	P	F	S	I	A
G	F	N	B	N	S	K	C	A	N	R	E	O	T	K
E	F	O	L	T	E	U	E	R	J	E	U	L	M	M
H	E	L	R	R	E	I	M	E	N	W	Y	A	T	T
P	R	U	Q	U	R	E	R	H	R	R	B	G	D	C
R	E	Z	P	X	M	U	P	F	B	D	G	X	D	J
Q	N	V	N	P	B	A	P	L	E	H	A	E	P	F
H	T	C	A	T	D	W	P	B	G	M	S	F	F	K
V	D	T	I	C	W	F	C	D	V	J	Z	Z	X	K
G	H	O	Z	R	X	Q	R	E	N	T	R	A	P	V
Y	S	O	G	T	I	A	M	O	L	H	B	W	O	W
N	E	B	J	J	T	Y	F	Q	X	Y	T	O	T	V
J	J	T	U	X	S	A	I	M	P	P	E	K	O	Y

ALIKE  
AMI  
CAT  
DAPHNE  
DIFFERENT

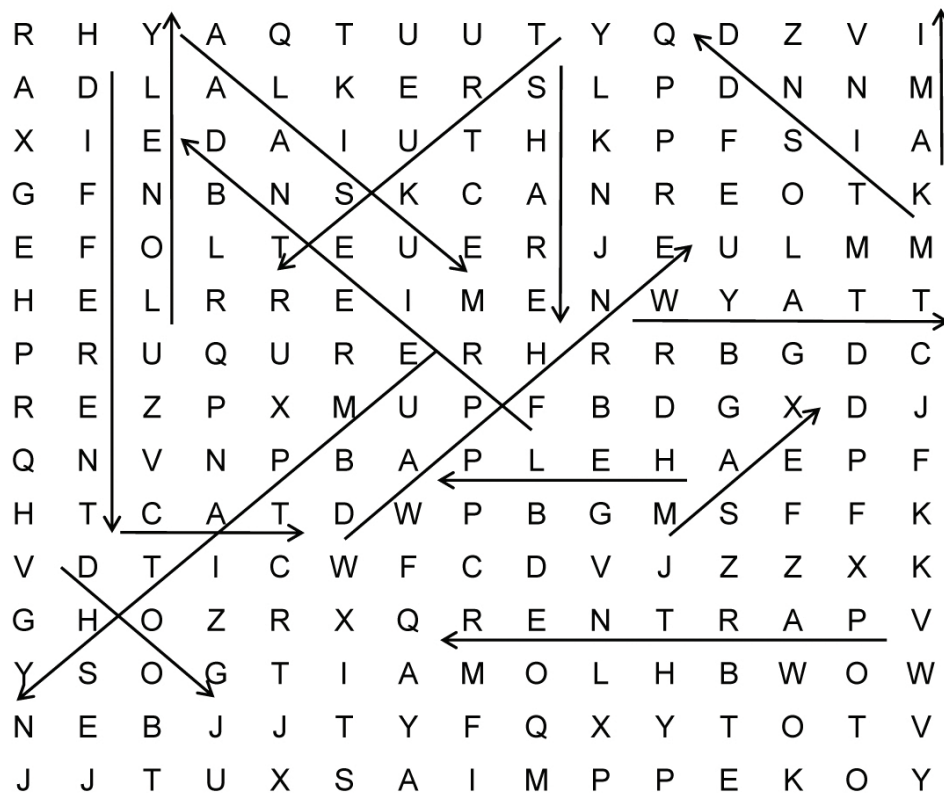
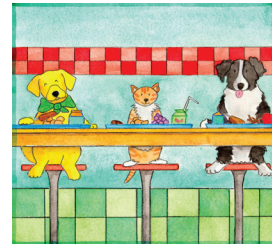
DOG  
EMPATHY  
FRIEND  
HELP  
KIND  
LONELY

MAX  
PARTNER  
SHARE  
TRUST  
WYATT



# Learns About Friendship

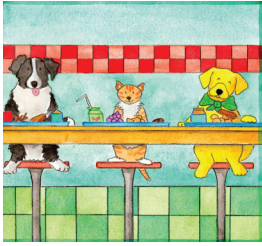
## Puzzle Solution



ALIKE  
AMI  
CAT  
DAPHNE  
DIFFERENT

DOG  
EMPATHY  
FRIEND  
HELP  
KIND  
LONELY

MAX  
PARTNER  
SHARE  
TRUST  
WYATT



## Wyatt Coloring Sheets

